

KANSAS

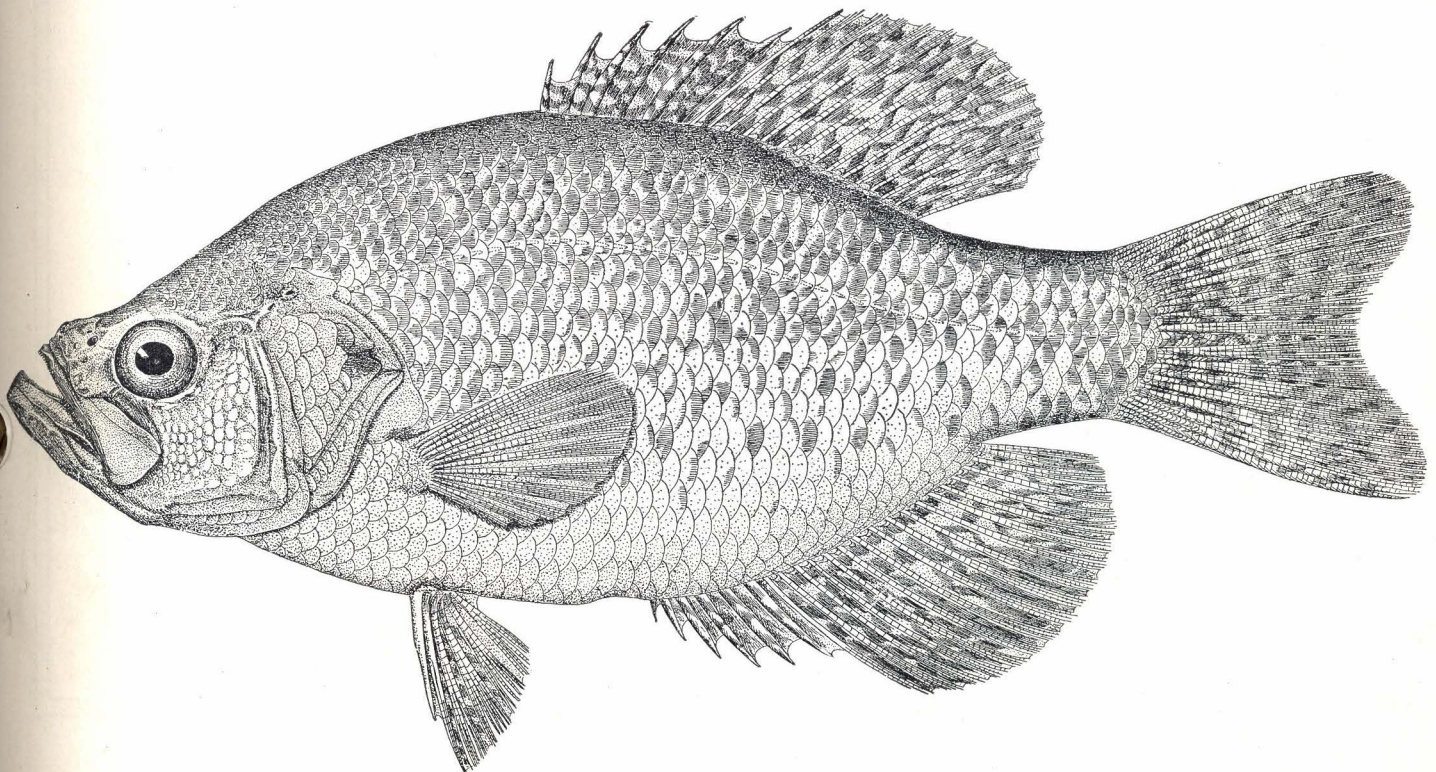


FISH AND GAME

VOL. III

APRIL, 1941

No. IV



White Crappie

COMMISSIONERS

LEE LARRABEE, <i>Chairman</i>	Liberal
E. J. KELLY, <i>Secretary</i>	Ottawa
JAY J. OWENS	Salina
H. M. GILLESPIE.....	Wichita
GARLAND ATKINS	Fort Scott
HARRY F. LUTZ	Sharon Springs

FISH AND GAME DIVISION

DAN RAMEY, <i>Superintendent</i>	Quail Farm, Calista
LEONARD SUTHERLAND, <i>Superintendent</i>	Meade County Pheasant Farm
CHARLES TROXEL, <i>Superintendent</i>	Quail Farm, Pittsburg
SETH WAY	Fish Culturist
LEO BROWN	Biologist

DISTRICT GAME PROTECTORS

FRED ANDERSON	Doniphan
JIM ANDREW	Anthony
A. W. BENANDER	Holton
H. D. BYRNE	Concordia
JAMES C. CARLSON	Salina
JOE CONCANNON	Lansing
JOE FAULKNER	Colby
EDWIN GEBHARD	Liberal
L. DICK GOLDEN	Goodland
RALPH HEPPERLY	Emporia
ARTHUR JONES	Downs
A. E. KYSER	Savonburg
OLIN MINCKLEY	Ottawa
WALTER RICKEL	Independence
JOHN SHAY	Kingman
CARL SUENRAM	Moundridge
FRED TOBUREN	Irving
CARL TEICHGRAEBER	Topeka
CHARLEY TOLAND	Wichita

LEGAL

B. N. MULLENDORE	Howard
------------------------	--------

PUBLICITY

HELEN DeVULT	Pratt
--------------------	-------

ENGINEERING

PAULETTE & WILSON, <i>Consulting Engineers</i>	Salina
ELMO HUFFMAN, <i>Engineer</i>	Pratt
WILBUR WAHL, <i>Landscape Architect</i>	Pratt

STATE PARK AND LAKE SUPERINTENDENTS

DUANE CARPENTER, Butler County State Park	Augusta
W. I. THOMAS, Crawford County State Park.....	Pittsburg
LEE G. HENRY, Leavenworth County State Park.....	Tonganoxie
JOHN CARLTON, Meade County State Park.....	Meade
W. F. PIGGOTT, Neosho County State Park.....	St. Paul
GEORGE M. CODY, Oberlin Sappa State Park	Oberlin
C. R. DAMERON, Ottawa County State Park.....	Minneapolis
B. E. HALE, Scott County State Park.....	Scott City
A. M. SPRIGGS, Woodson County State Park.....	Yates Center

KANSAS FISH AND GAME

Published Monthly By

THE KANSAS FORESTRY, FISH AND GAME COMMISSION

Pratt, Kansas

GUY D. JOSSERAND, Director

DAVE LEAHY, JR., Asst. Director

E. J. KELLY, Secretary

LEE LARRABEE, Chairman

VOL. III

APRIL, 1941

No. IV

Fishing Good in Kansas

If you have reached the point where war news, lease-lend bills, Virginio Gayda and spring fever seem to make life unbearable, read carefully the good tidings contained in the following letters written to us by the district game protectors. Fishing is the very tonic you need for those frayed and jagged nerves. Yes, we readily confess that we too, are thoroughly enjoying a prolonged and lingering attack of this disease. For that reason we have charged the game protectors with the responsibility of preparing copy for this month's issue of KANSAS FISH AND GAME. While they are doing this, the editorial staff will go fishing.

FROM A. W. BENANDER

DEAR DAVE: In regard to your letter of the sixth about the fishing in my district:

The Sabetha city lake, located five miles west of Sabetha, contains about one hundred acres and has good channel cat, bass and crappie fishing. I think this is the best fishing lake in Northeast Kansas for all kinds of fish. This is a city lake. They charge out-of-county residents \$1 a year license.

The Soldier city lake at Soldier, Kansas, covers about thirteen acres. Channel cat, bass and crappie fishing. A daily charge of 50 cents.

The Holton city lake, located at Holton, about five acres, furnishes good catfish, bass and crappie fishing. 50 cents charge is made to non-residents.

The Horton city lake, located at Horton, Kansas, contains about one hundred and seventy-five acres.

Good fishing of all kinds. There is a \$1 per year license charge.

The Atchison county lake, located five miles southeast of Horton, in Atchison county, is well over one hundred and fifty acres. Was opened to fishing in 1933; has been well stocked. Good fishing of all kinds; \$1 a year charge for out-of-county residents.

Soldier creek, running through the west side of Jackson and into Shawnee county is a good bullhead and channel-cat stream. The Delaware river, running through Brown and Atchison counties and into the Kaw river at Perry in Jefferson county, is also a good bullhead and channel-cat stream and for the ones who like to catch carp.

Then we have Crooked creek and Stranger creek over in Atchison county that are good fishing for bullhead and channel-cat fishermen; also, a lot of carp in these two streams.

Elk creek, running through Jackson and into the Delaware in Atchison county, is a good bullhead and channel-cat stream. Small, but very good fishing.

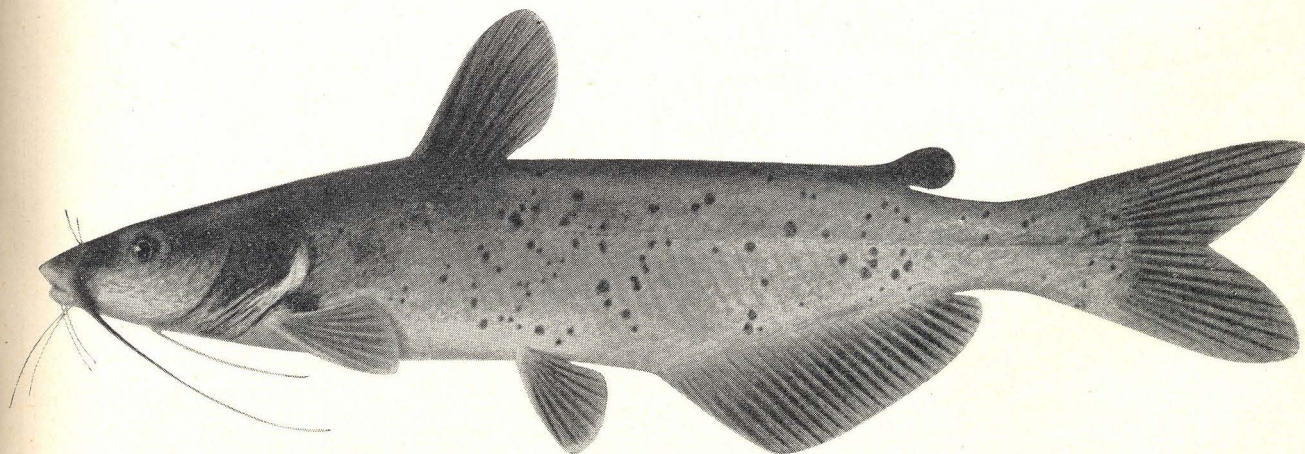
The Whiting city lake, containing twelve acres, located one mile north of Whiting, is a good bass and crappie lake. Not many channel cats caught here, but one of the best small lakes in the district.

Yours truly, A. W. BENANDER.

FROM OLIN MINCKLEY

DEAR DAVE: In response to your request in your general letter of March 6 regarding fishing conditions in this district, will attempt to give you the "dope."

As to rivers, there is just the Marais des Cygnes in



Channel Cat (*Ictalurus Punctatus*)

The season on this fish open until June 1.

these five counties. The Little Osage, south Linn county, and the Pottawatomie in Anderson and Miami counties, are sometimes called rivers.

Generally speaking, fishing will be better in this section than it has been since the drought—to what extent it is hard to say.

In Johnson county are Cedar, Kill and Mill creeks in the northern part of the county, all running directly into the Kaw. Indian, Tomahawk, Coffey and Wolf creeks in the south and east part of the county. Of these creeks, Cedar and Tomahawk are probably the best fishing.

Miami county has some nice fishing water. Bull, Wea, Middle, Mound and Elm creeks and the Marias des Cygnes and Pottawatomie rivers. All of these will be pretty good fishing this summer if proper conditions continue.

In Linn county we have the Marias des Cygnes river; Big and Little Sugar creeks, and numerous small creeks which will afford some good fishing.

Anderson county has the Pottawatomie river and its tributaries in the northern part, also Cedar creek, southwest of Garnett. The principal creeks in the south end are the Deer and Indian.

Franklin county has the Marias des Cygnes river, the Pottawatomie, Hickory, Oppanoose, Middle, Tuay and Tequa as principal creeks.

Now as to the fish to be taken in these streams: The Pottawatomie and Marias des Cygnes have about all species of our Kansas fish—channel cat, flat heads, bullheads, bass, crappie and sun fish. Of all the creeks I have named, few of them will have many channel cats. Bullheads, rock bass, crappie, carp and buffalo are the most common. A few black bass.

Out of this group I would recommend the Marias des Cygnes, Pottawatomie, Bull creek and the Big Sugar creek is good channel cat fishing. They are equally good for the other fish, of course. The remainder of the streams named could be classified as very similar to one another—mostly bass, pan fish and bullhead fishing.

As to lakes, we have the Gardner lake, Paola, Osawatomie, Pleasanton, Garnett, and Olathe, all city lakes. The Garnett city lake is the only one named which is free of charge. Perhaps Pleasanton lake should not be mentioned, as it is more or less a local proposition, as Paola and Osawatomie are. Only residents of the county and trade territory are permitted to fish in these lakes.

Gardner and Garnett lakes will be good fishing again this summer, as they are full and are in fine condition. Both have channel cats, bass, crappie, ring perch and plenty of rock bass. The "plenty" in that sentence should be confined to the rock bass.

Now if I have left off anything, or there is anything

additional you wish to know, let me hear from you and I'll try to get it.

Fishing will not be up to par yet this year, but if we continue in this "cycle of water" as in the past two years, there will be good fishing in this section in about two years more. These streams in eastern Kansas have been running plenty good all winter, and are at present. Yours very truly,

OLIN MINCKLEY.

FROM A. E. KYSER

DEAR DAVE: I inform you of fishing conditions in my district. To start with, we have the Neosho river, which crosses Allen county, and also curves into the western part of Cherokee county. The Neosho affords excellent fishing for channels, flatheads and yellow or river catfish, also some bass and a good sprinkling of crappie, along with an abundance of drum and carp.

We also have Big creek and Elm creek in Allen county, which yield all species of catfish, bass, crappie, drum and carp. These two streams were pretty hard hit by the drought.

Bourbon county has the little Osage, and the Marmaton rivers, both of which head in eastern Allen county and run east across Bourbon county. The Marmaton is good fishing above Fort Scott. These streams are in excellent condition at present and yield the following species: All kinds of catfish, drum, perch, bass, crappie and carp.

Bourbon county also has two lakes at which no extra charge is made for fishing. Rock Creek lake is four miles southwest of Fort Scott and city lake, which furnishes excellent bass and crappie fishing. Bullhead and yellow catfish are the only species of catfish present. This lake abounds with carp. There are also plenty of drum.

A newer lake, called Elm Creek, five miles southwest of Fort Scott, is a fisherman's paradise. In this lake hundreds of channel cats and what they call blue cats, weighing up to fifteen pounds, have been taken from this lake last year. Also, some fair bass and crappie, along with perch, blue gill and a few fine perch. Elm Creek is a county lake with no charge.

Lightning creek in western Crawford county, and Walnut in Northwest Crawford county, are streams with plenty of fish in them.

Spring river, which cuts across the southwest corner of Kansas, is ideal for fishing; both Spring river and the Neosho will be benefited by the big lake on Grand river in Oklahoma.

I was at Riverton the day before yesterday and the fish are already moving there. They were catching some right nice channels. Spring river also has bass, crappie and drum, as well as carp, and they catch a few jack salmon there in the spring. A few jacks are also caught in the Osage and Marmaton rivers.

Yours truly, A. E. KYSER.

FROM RALPH HEPPERLY

DEAR DAVE: In answer to your letter of March 6, will try to tell you something about the fishing in this district. I have three main rivers, two large lakes, a number of good creeks and have plenty of large ponds.

The Cottonwood river runs through Chase and Lyon counties and is a good fishing stream, for the reason that several large springs and creeks empty into it. It is well stocked with crappie, bass, channel cat and bullheads. Have seen some very nice channel cats taken already this spring.

The Neosho river runs through Morris, Lyon and Coffey counties, and is of course the largest stream in this area. It is noted for its large catfish. Catfish as large as thirty to forty pounds are reported every season. Crappie, bass and bullheads are also taken in good numbers.

The Marias des Cygnes in Osage county is also a noted fishing stream. Catfish, crappie, bass and bullheads are the anglers delight; however, a few jack salmon have been taken in recent years. This stream has a very steep bank and is wooded from end to end, so if the fishing is not so good, the scenery makes up for it.

Kahola lake, owned by the city of Emporia, attracts many anglers. It has been stocked by the Fish and Game Department. Large numbers of channel cat, crappie, bass and bullheads are taken.

I have a report of a five-pound bass taken at Reading lake, and have seen several channel cats weighing up to six pounds taken from our streams already this spring.

The water conditions in our lakes and streams is the best it has been in five years. This should be a record fishing season.

Yours truly, RALPH HEPPERLY.

P. S.—Ed Dumm landed a four-pound channel cat, taken from the Neosho river near Americus.

FROM WALTER RICKEL

DEAR FRIEND DAVE: I now "take my pen in hand." I am proud to do this because I believe I have the best fishing waters in the state of Kansas. (And parts of Arkansas or Missouri.)

First in my choice for the next four or five years for all kinds of fishing will be that part of the Grand river lake project which is in Kansas—namely, the Neosho river from the dam at Chetopa to the state line. There are several reasons for this choice. First, it has always been good. Why, last year, Joe, Fred and I took up five trot lines less than 200 yards below this dam and the first one (less than 50 yards below) had a 2-pound channel cat snagged through the dorsal fin. You don't even need bait.

Then, too, it will take some time for the fish to get

accustomed to the higher pressure of the deeper water and they will seek the shallow parts. Even now I am told that small fish are leaving the main body in thousands, going into the necks, and naturally, up stream until they reach the first obstruction, which is the dam at Chetopa. Even after the fish become accustomed to the pressure they will always come to shallow water to spawn and feed. This opinion is shared by fishermen I meet. The upper parts of the Neosho have always been and will always be the catfish (all kinds) stream of Kansas.

Oklahoma has very thoughtfully stocked their new lake, and closed the whole thing to fishermen for a year.

For all-round fishing I would next choose the Verdigris river. The dam here at Independence affords drum, crappie, perch, bass and cat fishing. It is as good an all-year-round hole as I have. Rivaling it in popularity are the two Coffeyville dams, one at the edge of town and the other several miles upstream. Numerous riffles along the Verdigris offer wonderful bait and fly casting possibilities, while the deeper holes tempt "pole 'n line fishin'" and "trot linin'."

If you want to specialize, I'd recommend Fall river for excellent bass and crappie fishing (and it is not devoid of cat). Up above Neodesha are Dunn's and the Middle dams. Riffles are plentiful between and above these dams and the vegetation and clear water are ideal for bass. This stream is good, way up above Fall river, but especially good between Fredonia and Neodesha.

If you are partial to large catfish, the Middle Caney in Chautauqua county is your water. The 43½-pound flathead came from Elgin. Crappie—nice large ones—were caught at Sedan late last autumn.

Many people consider the Elk river a fairly good "fishin' hole." I'm listing it in the position I think it deserves. It is a stream that not readily cleaned itself out after the dry years. Even now it could do with a good "gully washer." However, good fishing can be found up around Oak Valley and Elk City. A year ago a 63-pound cat was found dead in the ice at Oak Valley. Many trotline fishermen fish the Elk from the mouth or rather from the dam—here near Independence and on up for several miles.

Pumpkin creek in Labette and southeast Montgomery counties is good bass and crappie fishing.

Labette creek on south of Parsons and to where it enters the Neosho at Chetopa is good bass fishing.

You said we needn't mention state lakes. Still, I think the 6¼-pound bass I saw just after Jack Dean of Parsons had taken it from Lake McKinley, deserves mention.

All of the major streams have numerous small branches that offer good "crick fishin'." Sincerely,

WALTER RICKEL.

FROM FRED TOBUREN

DEAR DAVE: I am enclosing the reports you asked for regarding the lakes and streams in each county.

Marshall county: The Big Blue and Little Blue rivers are the best fishing streams in Marshall county, and fishing should be very good this year. Fishermen report more channel and yellow catfish in these rivers than for many years. The Black Vermillion river should be fair for channels.

Lake Idlewild, a city lake one mile north of Waterville, is fair for channels and bullheads. No charge is made at this lake.

Pottawatomie county: The Big Blue forming the west boundary should be very good. Rock creek and the Red Vermillion river should be fair for channel cat and bullheads. The Kaw river, forming the south boundary, fair for catfish at certain times.

Riley county: The Blue river forming the east boundary should be good and is the best fishing stream in the county. Wildcat creek and Fancy creek will be fair for catfish and bullheads.

Wabaunsee county: The best fishing in this county is in Wabaunsee lake operated by the city of Eskridge. This lake was opened in 1939 for two months and then was open for the season in 1940. The area of the lake is 275 acres and should be excellent this season for bass, crappie and channel cat, also some bullheads. This lake will open about May 15th. A fee of \$2.50 is charged for a season permit.

Mill creek always has been known as one of the best streams for channel cat, also bullheads. Kaw river good at times.

Geary county: Smoky Hill river and Clark creek are the two best fishing streams in the county. Lyons creek and Humboldt creek are fair. The Republican river is very good in spring for channel cats; also, many yellow cats are caught here.

Very truly yours, FRED TOBUREN.

FROM JAMES C. CARLSON

DEAR DAVE: Enclosed find stream information.

Saline county: We have the Saline, Solomon and the Smoky Hill rivers. They are all three good channel-cat streams; also, in the Smoky river you will find carp and buffalo.

Ottawa county: Here you will find the Solomon river good channel-cat river and also bullheads.

Ellsworth county: Smoky river, good channel-cat river, sand bottom, plenty of springs, usually very clear, plenty of carp.

Dickinson county: Smoky Hill river and Solomon are good channel-cat rivers. Below Enterprise dam you will find good buffalo fishing. Big City lake at Herington charge a fee of 50 cents per day, but it is good fishing and you will find people from all over the state fishing there.

Lincoln county: The Saline river is a good channel-cat and bullhead stream. Boys from Ellsworth, Emporia, Salina, etc., like to fish it. Shady Bend dam is also a popular fishing hole for people from all over the state.

Yours truly, JAMES C. CARLSON.

FROM CARL SUENRAM

DEAR MR. LEAHY: In regards to your letter about fishing conditions in my district: There is not a great deal of fishing in Rice county. City lake at Sterling is good fishing for bass, crappie, blue gill, channel cat, and carp weighing up to 20 pounds. There is no charge at this lake. There is good fishing in Cow creek, which crosses the county. Arkansas river along south side of county, with sand pits in the stream near Raymond, affords good fishing for catfish and carp. No charge is made along the river. Lake at Little River which was recently opened affords good fishing for bass, crappie, blue gill, and catfish at a charge of 25 cents per day per person.

McPherson county: Smoky River in north part of county affords good catfish and carp fishing. One can fish along the river by getting permission of farmers. Lake Inman, about 150 acres, free for all, good fishing for crappie and channel cat. Turkey creek has furnished good bullhead fishing; now ruined by oil.

Marion county: North and South Cottonwood rivers cross the county from northwest to southeast and are good streams for all kinds of catfish, bass, and crappie. Doyle creek, southwest part of the county, empties into the Cottonwood river at Florence and is good for catfish and carp fishing. Marion county lake, 1½ miles east, 1½ miles south of Marion, opened in 1940; good fishing for crappie, bass, blue gill and channel cat. Fee is 50 cents per day per person, and required to have state fishing license.

Harvey county: The Little Arkansas river across the southwest corner of the county good for all kinds of catfish, bass, crappie, and carp. Fish with the permission of farmers.

Reno county: Big Arkansas river good channel-cat fishing. Cow Creek across the county is good for all kinds of catfish fishing. North Ninnescah river furnishes good catfish fishing. Several good private ponds in southwest part of the county afford good fishing for private parties. Yours truly, CARL SUENRAM.

FROM JOHN SHAY

DEAR DAVE: The Ninnescah river furnishes a lot of fishing to the fishing public, and the public can fish in most of its waters. The fish taken from this stream is mostly channel cat. In some places around Cunningham and Cheney a charge of 25 cents is made. This river is in Pratt, Kingman, and Sedgwick counties.

The Little and Big Arkansas furnishes a large amount of fishing in Sedgwick county. The fish taken from this stream is mostly channel cat and bullheads.

We have in the city of Kingman a Mill Race which is about three-quarters of a mile long, which affords a lot of free fishing to the public. Also a small lake in the park of Kingman. These two waters are maintained by the city for the public. They catch mostly channel cat in the Mill Race. In the Lake crappie, blue gill, bass, channel cat and bullheads are caught. No charge is made.

We also have a Lake at Rago which is located between highway 14 and the Santa Fe railroad. There is no charge made for fishing. Mostly channel cat and bullheads are caught. Mr. Harry Bennington of Rago has about fifteen acres of water for which he makes a charge of one dollar a day for fishing. George Hay, also of Rago, has three lakes with a fishing area of about fifteen acres. He also makes a charge of one dollar a day. From these lakes are taken channel cats, bass, crappie and blue gill.

The Arkansas river in Edwards county affords some fishing. They have two sand pits where no charge is made. The catch is mostly channel cat. Lee Roy Schultz has a sand pit east of Trousdale where a charge of 25 cents is made. The catch is channel cats, bullheads and a few bass.

Mr. H. S. McCune also has three sand pits east of Kinsley where a charge of 25 cents is made and about the same kind of fish is taken.

Mr. C. E. Piester of Kiowa county, has a pond on which he makes a 25-cent charge. They catch mostly channel cats, and blue gills.

The Thompson creek, which runs through the Robbins and Miller ranch, has mostly channel cat, and there is no charge to fish.

The county-owned lake at Pratt affords an abundance of fishing. The catch there is mostly channel cat and some crappie, bass and bullheads. There are a number of fishing holes along the highway in Kingman county that furnish a lot of fishing. They catch mostly channel cat, blue gill and crappie.

Dave, this is about as much as I know about the fishing holes and lakes in my territory.

Yours truly, JOHN SHAY.

FROM CARL TEICHGRAEBER

DEAR MR. LEAHY: The best places to fish in my district are the Tonganoxie state lake, Shawnee county lake, Fleimers lake, Leavenworth county at a charge of 50 cents. Lone Star lake, Douglas county, where a charge of \$1 is made, is good for all kinds of fish. Stranger creek in Leavenworth county has all kinds of fish, crappie, bass, sun perch, catfish, bullheads, carp and buffalo. Also the Kaw river. Other streams are hardly worth mentioning, as they have been nearly dry the last two years. If this is not enough information please let me hear from you.

Yours truly,
CARL TEICHGRAEBER.

FROM JIM ANDREW

DEAR MR. LEAHY: I am enclosing the data that you requested in your letter of March 6 in regard to the lakes and streams, and their fishing possibilities, in my district.

Sumner county: The Chichaskia river is one of the best channel-cat streams in Southern Kansas, and can be fished by permission of the landowners, some of them require 25 cents a car.

The Ninnescah river is also a channel-cat stream, but there are also some large river cats taken from it. This stream is probably fished the most of any stream in Sumner county. It carries a good depth of water at all times, and has some deep holes in it.

The Arkansas river is a good stream and furnishes good fishing all along it; also, north of Oxford, Kansas, there are two or three dams. This makes a place that is hard to beat for fishing possibilities. It is fished very heavily. The Ninnescah river also empties into the Arkansas at this point. This river is known for its large flatheads and also channel cats. It has some very deep holes in it, where they have pumped sand out of it, but carries a good depth at all times.

Slate creek also provides a good place to fish, as there are crappie and some bass, bullheads, flatheads and carp. This stream can be fished by anyone holding a state license. It is a very popular stream for the residents of Sumner county, particularly the city of Wellington.

The Wellington city lake, owned by the city, is one of the best for fishing in Sumner county. It has 325 acres of water, average depth 10 feet, maximum depth 30 feet. Most any kind of fish that you would want can be taken from this water. To fish in this body of water one must have a state license; also, a fee is charged of \$1 per year for county residents and 50 cents per day for out-of-county residents if accompanied by a county resident license holder.

The Chichaskia river also has a resort known as Drury park. The river has a permanent dam located here where it backs the water up for approximately two miles. There are a lot of channel cats taken here. There are cabins and boats for rent, also.

Harper county: The Anthony city lake has 155 acres of water and a maximum depth of 30 feet. The average depth is 7 feet. Channel cat, bass, crappie and drum are caught. Several cats taken have weighed 5 to 14 pounds, and bass 4 and 5 pounds. To fish here one must have a state license and a city license which costs \$2 per year for man and wife, or 25 cents per day for a noncity license holder. State regulations are required in regard to ages.

Barber county: Lake Medicine or 99 Springs is known to possess channel cat, bass, crappie and blue gill. The charge is \$1 per day for nonmembers; it is operated as a stockholders' proposition.

The Medicine river is one of the best channel-cat streams, when it flows, in southern Kansas. The last few years it has been dry.

Barber county has several private ponds that have been built and leased to clubs and individuals. They are all spring fed.

Comanche county: Mule creek in Comanche county is a nice stream to fish, as its water come from springs. It possesses bass, crappie and bullheads and some channel cat.

Comanche county has several private ponds that have been built in the last three or four years. These will be good, as most of them have been stocked.

Hoping this meets with your approval, I remain,
Yours truly, JIM ANDREW.

FROM EDWIN GEBHARD

DEAR MR. LEAHY: The following is report on fishing conditions in my district as per your request of March 6th.

Hamilton county: Some fishing in Horse creek, north of Medway, fishing free. Mostly perch and bullheads. Helm lake, southeast of Syracuse, catfish and bass. No charge for fishing; permission must be had.

Kearny county: The only fishing now in Kearny county is in a few private ponds, open to friends only.

Finney county: Most of Pawnee creek in Finney county is open to public fishing; only one private lease on this creek in the county. Some of the ranchers and farmers along the creek make a small charge for fishing. Mostly bullheads, channel cats and a few bass are taken from this water.

Grant county: Some fishing in the north Cimarron; bullheads, channel cat and bass. Fishing is free.

Gray county: Some fishing in Crooked creek in the south edge of the county; mostly bullheads; fishing free.

Hodgeman county: In Hodgeman county there is a continuation of Pawnee creek, all open to public fishing, though a few farmers make a small charge for fishing. Bullheads, channel cat and a few bass are taken.

In the northwest corner of the county Bill Sinclair has built a dam on Hackberry creek, forming a lake of forty acres; bullheads, channel cat and some bass are taken.

Buckner creek through the county mostly open to the public; a few places are leased, only a very few farmers charge for fishing. Bullheads, channel cat and bass are taken.

Sawlog creek; the best fishing places on this creek are under lease, though some of the creek is open to the public. Where this is the case, fishing is free. Bullheads, channel cat and bass are taken from this water.

Some fishing in Spring and Rock creeks, though this is limited. Mostly perch and bullheads are taken.

Hodgeman county lake to date is free and open to the public. Bullheads, crappie, channel cat and bass are taken in order named.

Seward county: Limited fishing in sloughs along the Cimarron river; bullheads; fishing free.

Meade county: Crooked creek through Meade county mostly open and free; bullheads, channel cats and a few bass are taken.

Ford county: Duck creek; good fishing, mostly leased; some free fishing on lower end of creek. Bullheads, channel cat, crappie and bass.

Sawlog creek, some leased, mostly open to public at a small charge; mostly bullheads, a few bass are taken.

Five-mile creek, mostly open at a small charge. Bullheads and bass are taken.

Mulberry creek, open to public and mostly free; one farmer makes a small charge. Bullheads, channel cat are taken from this creek.

Fishing in Arkansas river is open and free. Bullheads and channel cats are taken from the sand pits and deep channels in the river.

Spearville lake, leased, good fishing; bullheads, channel cat, crappie and bass taken in order named.

Trust the above will supply you with the desired information. If not, ask for more. Very truly yours,
EDWIN GEBHARD.

FROM ARTHUR C. JONES

DEAR DAVE: Your letter of March 6, relative to fishing conditions in District 14. Sorry I am so late with this report, but it seems I always have a lot of irons in the fire.

Smith county: The Gaylord dam affords fair bullhead fishing in the North Solomon river. The Ott Tomlinson WPA pond (3 miles east of Smith Center) was stocked with salvage fish in 1939. Channel cat, bullheads and a few crappie from Dwight Hardman's pond in Rooks county. Quite a stocking of crappie from the Francisco pond in Osborne county. Both of these ponds were drying up. There is no charge for fishing on the Tomlinson pond to date. The two Solomon rivers are not extra good fishing any more in my district. The north fork fishermen holler a lot that the fish cannot come up beyond the Downs dam.

Phillips county: The Solomon river in this county is the same as in Smith county. Prairie Dog creek in the northwest part of the county has some bullhead fishing. There is a city-owned lake at Agra, Kansas, channels, crappie, bass and bullheads are caught. The charge, \$1 per season for the right to fish. The city lake at Logan, Kansas, opened last year with low water supply. It affords channels, bass, crappie and bullheads. A charge was made by day or by season for the right to fish. I am unable to tell you just what the program will be this season on the charge; they have not as yet made up their minds.

Osborne county: Solomon river not very good fishing. The river is not much for channels until you drop down to Beloit, Glasco, Delphos and Bennington. We have the Hobbie lake in this county and I think at one time it was stocked by the Department. Bullheads are about the only catch now. This is in the extreme east edge of the county, southwest of Tipton, Kansas. It is now leased by a bunch of sportmen from Hunter, Kansas. Not much of a fishing lure.

Rooks county: The Stamper pond was stocked last year by the Department. It is privately owned and I don't know what the setup will be when opened. The South Solomon is slim fishing in Rooks county; bullheads in the holes is about all.

Russell county: The Saline river is not very good fishing any more in Russell county, due to pollution, salt, etc., from the oil fields. It sure used to be a good channel-cat stream but not anymore in either Russell or Ellis counties.

The Smoky Hill river is good for channel-cat fishing. Big Creek in Russell county is also good channel-cat fishing. The city reservoir in Russell, Kansas, is good fishing; channel cats, bullheads, crappie, bass and bluegill.

Ellis county: The Smoky Hill river affords good channel-cat fishing when there is sufficient water supply. There are times when the river in this county gets pretty low. Big Creek in Ellis county is very good fishing. The city of Hays has eight low-water concrete dams in the creek and it has been stocked with crappie and bass at different times. A good channel-cat stream, also. At Ellis, Kansas, on this creek they have a large-size dam that backs the water up for about two miles and makes a very nice lake, mostly in the city limits of Ellis. Bass, crappie, channel cats, bullheads and some drum were additionally stocked last year.

Barton county: The Barton county lake; a charge of \$10 per year per family is made for membership. This charge entitles the family to the rights of fishing, swimming, boating, golf, tennis, and croquet. There is very good fishing here and the lake yields channels, bass, crappie, drum, bullheads and bluegill. The Walnut creek in Barton county is fair fishing next to the mouth where it empties into the Arkansas; bullheads and channels. The Arkansas river is not so good; a few channel cats are caught in the sand pit holes.

The McKinney sand pit out by the hospital has bass, crappie and a few channels. This has been stocked quite some time. It also serves as a swimming pool for a certain element around Great Bend, as it is just in the west edge of the city limits.

Rush county: This county has Walnut creek for its only stream and it is not a fish stream in this particular county. It is also pumped considerable for irrigation purposes.

Pawnee county: The Arkansas river in Pawnee county is no fishing stream. Pawnee creek, emptying into the Arkansas at Larned, is a fishing stream. Frizzell ranch has a good dam and the fishing is good at this location. The dam backs water up on J. Blackwell and it is very good fishing at this location. Blackwell makes a charge of 50 cents per carload for the right to enter on his land. The stream affords bass, crappie, channel cat. Irrigation projects are used quite extensively but this is a nice little stream anyway. W. W. Schumacher, adjacent to the city of Larned, has a good fishing spot. His dam went out last year, but I understand another is to be built soon. He issues membership cards at \$1 per year. The State Hospital, four miles west of Larned, has a good dam and another was built last fall just below the old one about a mile. Of course this is for irrigation purposes, but it does improve fishing in the stream. Above the hospital four miles is the Moffet dam and there is good fishing at this location. In the west side of this county the creek gets pretty low and is pumped hard, around Rozel and Burdett.

Yours truly,

ARTHUR C. JONES.

FROM C. H. TOLAND

DEAR DAVE: I am reporting to you on the fishing condition in my district.

Butler county has had some good reports and I have seen good catches of bass and crappie taken out of the Little Walnut river and Rock creek east of Douglass, Kansas.

Elk county: The fishermen have been having good luck catching channel catfish out of Fall river.

Cowley county: Fishing has been good in Grouse creek and Silver creek, east of Arkansas City.

Chautauqua county: The Middle and Little Caney rivers have been good for bass and crappie; also, Pool and Deer creeks.

Sedgwick county: I can't say much about Sedgwick county as I have only been east of U. S. highway 81, but they have caught some nice channel catfish out of the Big Arkansas river between Wichita and Mulvane.

Yours truly,

C. H. TOLAND.

Another Kansas Fishing Hole

Ed Abels, one of the enthusiastic sportsmen of Douglas county, has asked that we extend, on behalf of the Douglas county sportsmen, a cordial and genuine invitation to other Kansans, to try their fishing skill at the Lone Star lake, seventeen miles southwest of Lawrence. This lake of one hundred and ninety-eight acres has been open for one year. It has been heavily stocked with fish from private lakes of Douglas county.

Since this is a county lake, the board of county commissioners have made a flat charge of \$1 per year.

National Coursing Association Meets At Salina, April 27 to May 4

Purses totaling \$8,000 will be contested for by the 600 or more greyhounds expected to be entered in the spring meet of the National Coursing Association to be held at Salina, April 27 to May 4, according to Dan. O. Cain, Salina, president of the National Coursing Association.

Three major and four consolation stakes will be run. The major stakes will be the Derby cup, open to all ages greyhounds; the Futurity cup, open to all puppies whelped between June 1 and December 31, 1939; the Sapling cup, open to all puppies whelped between January 1 and June 30, 1940.

All entries must be registered with the National Coursing Association, the only registry in America recognized by the English, Irish and Australian greyhound stub books.

Early entries include the dogs of prominent owners of California, Florida, Illinois, Ohio, Iowa, Missouri, Texas, Oklahoma, Nebraska, and Kansas.

All events will be run in the Smoky Hill river bottoms, five miles southeast of Salina.

Shawnee County Field Trials

Cold weather slowed up the crowd and incidentally made it difficult for bird dogs to find the planted quail at Lake Shawnee, Sunday, in the first shooting dog field trial held here, but the weather wasn't much of a handicap to "Mandy," a live and white pointer owned by Paul Pinet, for Pinet's dog took first place in the opinion of the judges, Charles Kincaid and Harold Medill, of Independence.

Frank Down handled the Pinet dog, which found two well hidden bevy of birds in the allotted 15 minutes, but her brace mate, "Lady," owned and handled by Alvia Anderson, did not honor either find. "Mandy" was in brace No. 17, and made her find in midafternoon of an all-day program.

HUSSEY DOG SECOND

Ted Hussey's "Lucky Ghost," orange and white English setter, working in the fourth brace opposite Dan McBean, owned by Spide Darrow, took second honors, and "Comanche Mickey," owned by Lynn Dougherty, of Topeka, took third. Darrow's dog honored the find with Hussey's dog, but "Bonnie," brace mate of "Comanche Mickey," did not honor the find.

Ten braces were run off before noon, and with the wind blowing so strong many of the dogs had bad luck. There were only two bevy finds before noon, the other being Osage Flash, pointer owned by Jack Campbell, and handled by Ray Helser, made a find and was backed by brace mate "Sport," owned by Malcolm E. Harbaugh.

Each brace of dogs was given 15 minutes to find birds. Just after time had been called by the judges, "Spunky," owned by Jerry Puffer, found a bevy, and Dr. W. W. Reed's "Paddy Reed" honored, but both were outside the time limit.

LARGEST TRIAL IN STATE

This was the largest dog trials ever held in Kansas, and drew a large gallery, most of whom remained in cars and followed the drives around. The course director and one or two others rode horses. A few fans followed the braces for brief periods, but usually the cold weather chased them back to cars after one brace.

The event was sponsored by the Shawnee County Sportsmen, and was a success in every way. Another such meet is planned for the near future, Joe Springer, organization president, said. Quail were furnished by the state fish and game department.—*Topeka Daily Capital*.

Through the Bottle Neck

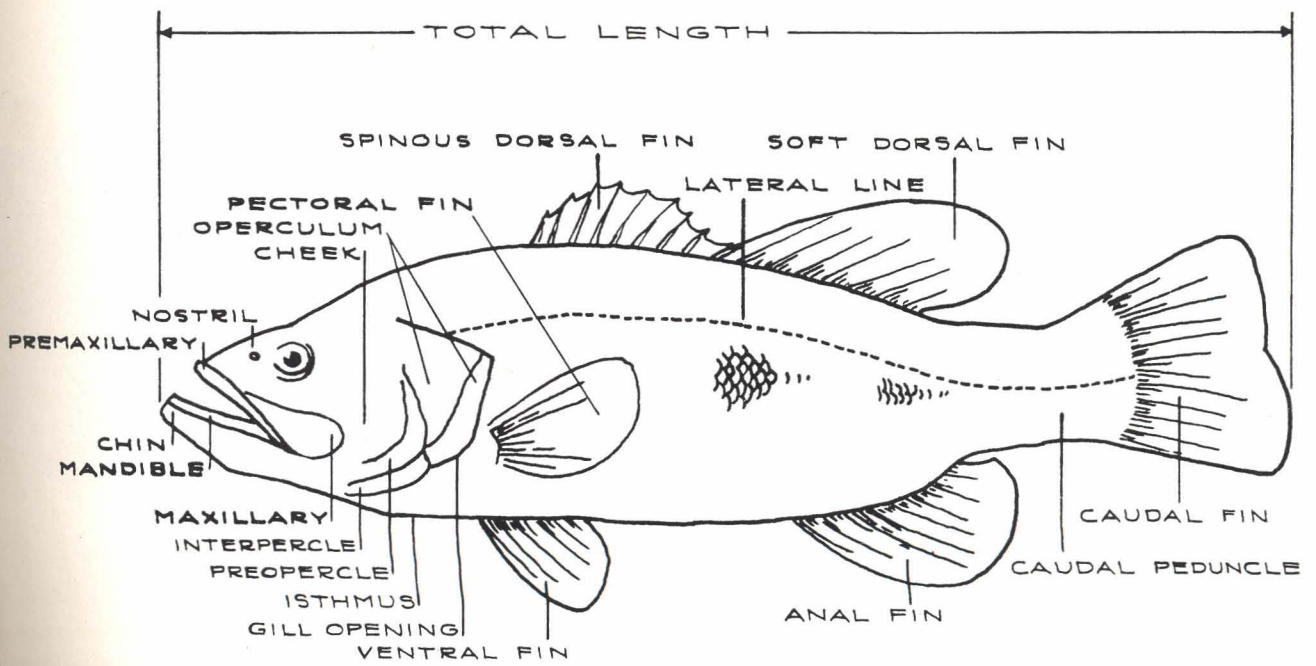
Governor Payne H. Ratner recently signed the first fish and game law passed by the 1941 session of the Legislature. This measure, Senate bill No. 129, provides for the legal possession of game birds for a period of thirty days following the close of the legal open season. This bill, too, provides that Kansans who hunt in other states may keep in Kansas storage game taken in other states for a period of thirty days following the close of that state's season. Senate bill No. 129 was introduced and sponsored by the Forestry, Fish and Game Commission, as another service to the Kansas sportsmen. Under the repealed law it was illegal to have game in possession after the season closed.

Closed Seasons

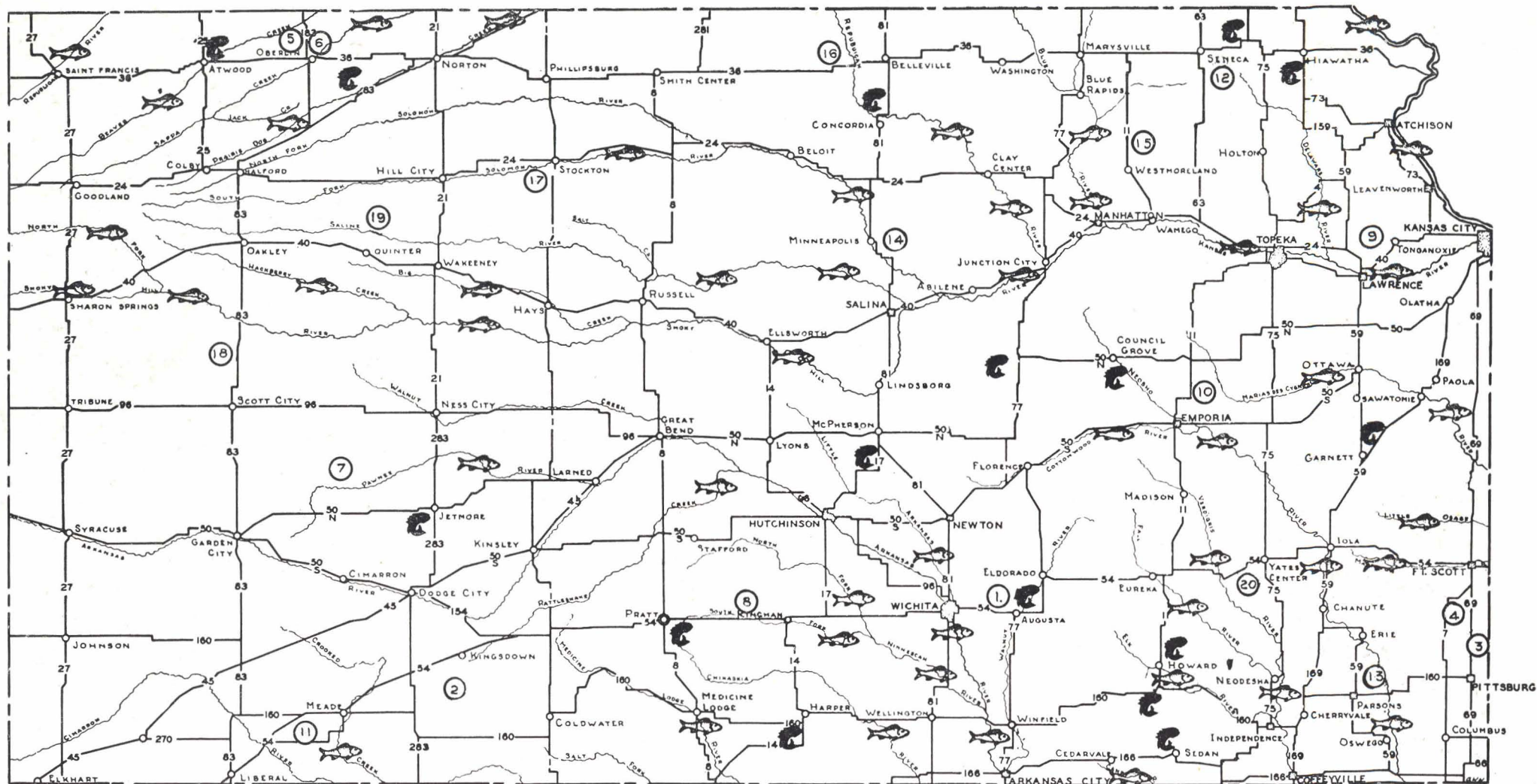
Although the fishing seasons are clearly stated on the current fishing license, newspapers persist in setting other seasons. We again remind you that the closed season on bass and crappie of all species in Kansas, is from April 20 to May 25, both dates inclusive. The closed season on channel cat is from June 1 to June 30, both dates inclusive.

Notice

The time for revising our mailing list is again at hand. If you have been receiving a copy of "Kansas Fish and Game" and want it continued, please be good enough to drop us a line giving mailing instructions. Many copies are being returned to us because improperly addressed. There has been no advance in the subscription price.—OLE DAVE.



• LARGE-MOUTHED BLACK BASS •



② State Lakes

1. Butler County State Park
2. Clark County State Park
3. Crawford County State Park No. 1
4. Crawford County State Park No. 2
5. Decatur County State Park No. 1
6. Decatur County State Park No. 2
7. Finney County State Park

City and County Lakes

8. Kingman County State Park
9. Leavenworth County State Park
10. Lyon County State Park
11. Meade County State Park
12. Nemaha County State Park
13. Neosho County State Park
14. Ottawa County State Park

River and Stream Fishing

15. Pottawatomie County State Park
16. Republic County State Park
17. Rooks County State Park
18. Scott County State Park
19. Sheridan County State Park
20. Woodson County State Park